

**To arrange a viewing contact us  
today on 01268 777400**



ASPIRE

ASPIRE



ASPIRE



ASPIRE



ASPIRE

## **Paignton Close, Rayleigh Guide price £500,000**

Offered with no onward chain, this recently redecorated four/five-bedroom detached home occupies a desirable corner plot in a quiet residential setting, within easy reach of Rayleigh Town Centre, the mainline station, and excellent schools. The property offers spacious and versatile accommodation, including a generous living room, flexible dining room/fifth bedroom, four well-proportioned bedrooms, and a master suite with scope for adaptation. Externally, the home benefits from a landscaped garden, detached double garage, and off-street parking, with excellent potential to extend or reconfigure into open-plan living, subject to the necessary consents. **\*\* Guide Price £500,000 - £550,000 \*\***

Offered with no onward chain, this elegant four/five-bedroom detached residence occupies an enviable corner plot, discreetly positioned within a peaceful residential setting while remaining exceptionally convenient for Rayleigh Town Centre, the mainline station, and its highly regarded schools. Recently redecorated throughout, the home presents beautifully and offers impressive potential, with generous scope to extend the kitchen or re-configure the layout to create a striking open-plan kitchen, living, and dining space perfectly suited to modern lifestyles. Ideal for the contemporary commuter family, the property combines generous proportions, tranquillity, and effortless access to a wealth of local amenities and transport links, all within a short walk.

The welcoming entrance hallway immediately establishes a refined first impression, showcasing elegant solid wood flooring and a striking contemporary staircase with glass balustrading rising to the first floor. The ground floor is further enhanced by a stylish cloakroom and a separate utility room, seamlessly blending practicality with sophistication.

The kitchen is thoughtfully arranged and fitted to three walls, providing a sleek and highly functional space, with double doors opening directly onto the garden and offering convenient access to the garage. The principal living room is generously proportioned and inviting, ideal for both relaxing and entertaining. A separate dining room—currently utilised as a fifth bedroom—adds excellent versatility and can be adapted to suit a variety of lifestyle requirements.

To the first floor, four well-appointed bedrooms are served by a beautifully presented family bathroom. The accommodation has been intelligently adapted by the current owners, with the fourth bedroom currently arranged as an impressive walk-in wardrobe; however, the original doorway remains in place, allowing for straightforward reinstatement as a bedroom if desired.

Externally, the property is further complemented by a landscaped garden with direct access to the detached double garage, measuring approximately 16' x 16' and fitted with a remote-controlled up-and-over door. Additional off-street parking is available to the front, completing the appeal of this stylish, adaptable, and superbly located family home.

#### **LOUNGE**

15' 3" x 13' 10" ( 4.57m 0.91m x 3.96m 3.05m)

#### **DINING ROOM / BEDROOM**

11' 9" x 10' 6" (3.35m 2.74m x 3.05m 1.83m)

#### **KITCHEN**

12' 0" x 7' 7" (3.66m 0.00m x 2.13m 2.13m)

#### **UTILITY**

5' 9" x 5' 8" (1.75m x 1.73m) (1.52m 2.74m x 1.52m 2.44m  
(0.30m.22.86mm x 0.30m.2)

#### **BEDROOM / ENSUITE**

13' 6" x 11' 4" (3.96m 1.83m x 3.35m 1.22m )

#### **BEDROOM**

9' 8" x 9' 8" (2.74m 2.44m x 2.74m 2.44m )

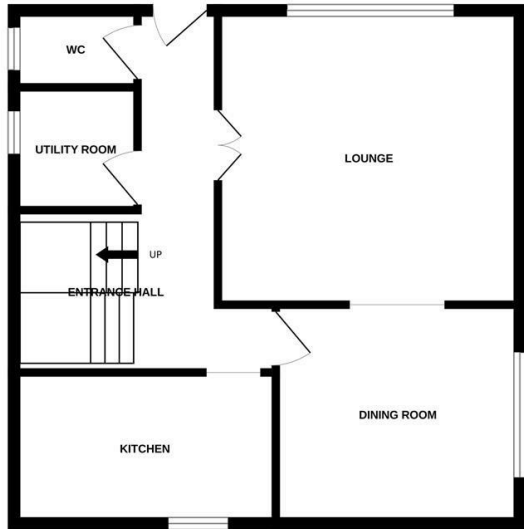
#### **BEDROOM**

12' 7" x 7' 3" (3.66m 2.13m x 2.13m 0.91m)

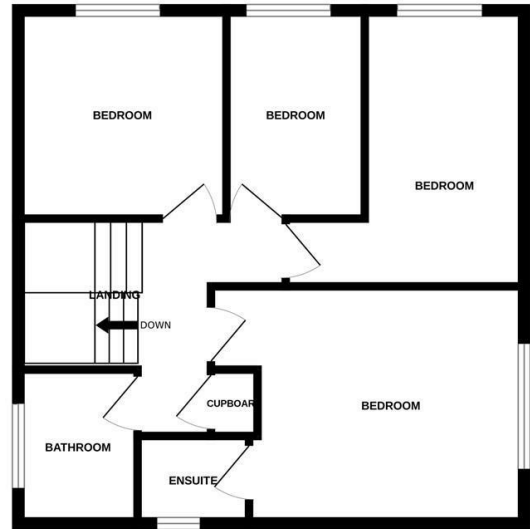
#### **BEDROOM**

9' 8" x 6' 6" ( 2.74m 2.44m x 1.83m 1.83m)

GROUND FLOOR  
561 sq.ft. (52.1 sq.m.) approx.



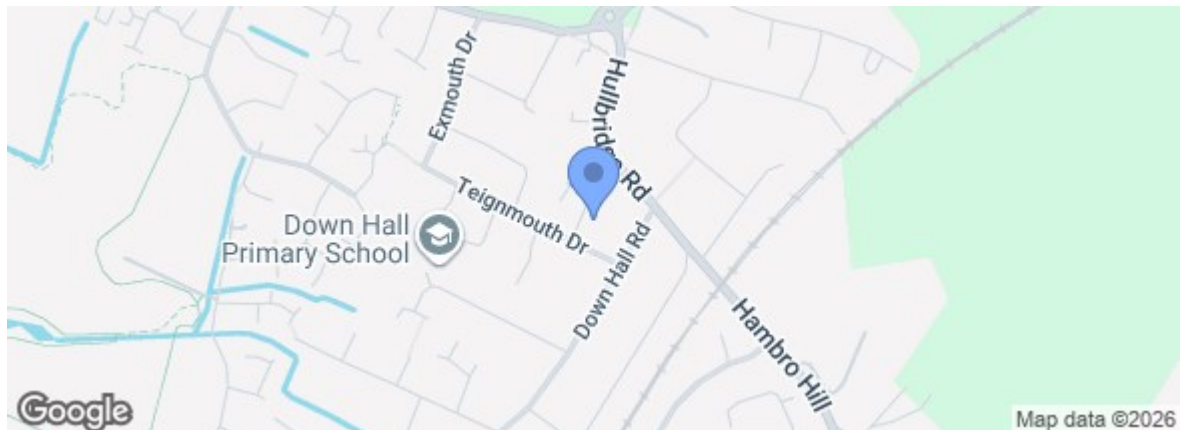
1ST FLOOR  
561 sq.ft. (52.1 sq.m.) approx.



TOTAL FLOOR AREA: 1122 sq.ft. (104.3 sq.m.) approx.

Whilst every attempt has been made to ensure the accuracy of the floorplan contained here, measurements of doors, windows, rooms and any other items are approximate and no responsibility is taken for any error, omission or mis-statement. This plan is for illustrative purposes only and should be used as such by any prospective purchaser. The services, systems and appliances shown have not been tested and no guarantee as to their operability or efficiency can be given.  
Made with Metropix ©2025

Energy Efficiency Rating		Current	Potential
Very energy efficient - lower running costs			
(92 plus)	A		
(81-91)	B		
(69-80)	C		
(55-68)	D		
(39-54)	E		
(21-38)	F		
(1-20)	G		
Not energy efficient - higher running costs			
England & Wales		EU Directive 2002/91/EC	
Environmental Impact (CO <sub>2</sub> ) Rating			
Very environmentally friendly - lower CO <sub>2</sub> emissions			
(92 plus)	A		
(81-91)	B		
(69-80)	C		
(55-68)	D		
(39-54)	E		
(21-38)	F		
(1-20)	G		
Not environmentally friendly - higher CO <sub>2</sub> emissions			
England & Wales		EU Directive 2002/91/EC	



Under the Property Misdescriptions Act 1991 we make every effort to ensure our sales details are accurate but they are a general outline and do not constitute any part of an offer or contract. Any services, equipment and fittings have not been tested and no warranty can be given as to their condition. We strongly recommend that all the information provided be verified by your advisors and in particular, measurements required for a specific purpose such as fitted furniture or carpets. Please tell us if you have any problems and members of our branches will help either over the phone or in person. A copy of our complaints procedure is available on request. The details are issued on the strict understanding that any negotiations in respect of the property named herein are conducted through Aspire Estate Agents.